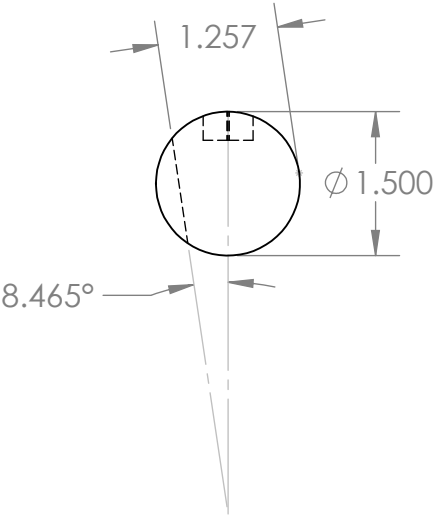
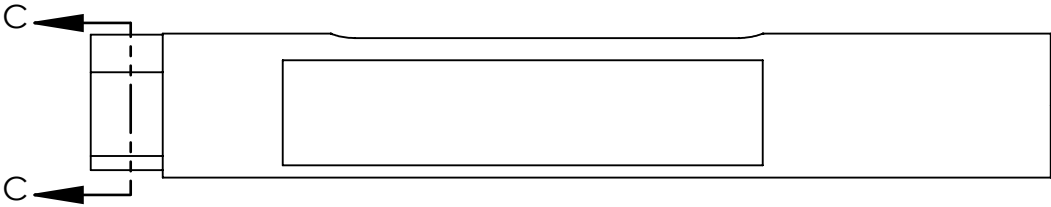
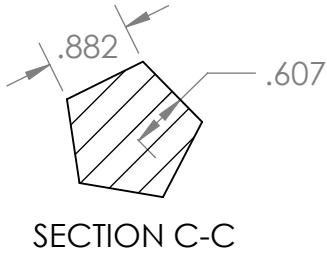
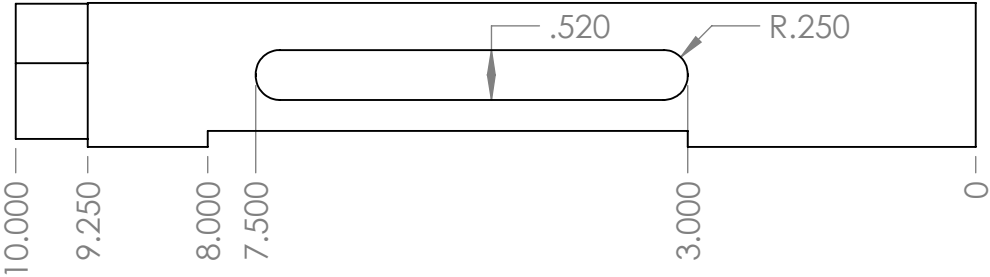
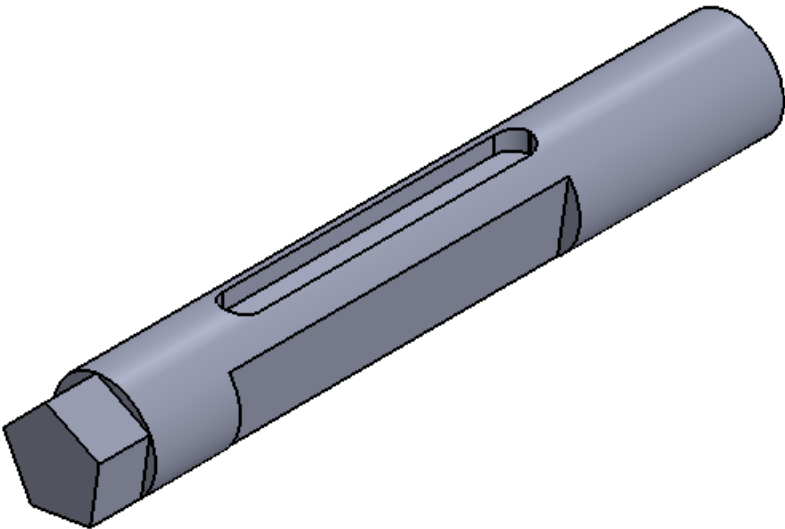



(1.) The circumscribed pentagon diameter
equils the part diameter.

(2.) The measure of between the outside
diameter and tha flat of the closed pocket
is 1.200"



	NAME	DATE	 Central Maine COMMUNITY COLLEGE		
DRAWN	ILM	5/18/16			
CHECKED			TITLE:		
UNLESS OTHERWISE SPECIFIED:			4th Axis Project 3		
DIMENSIONS ARE IN INCHES					
TOLERANCES:					
ANGULAR: MACH ±					
TWO PLACE DECIMAL ±.01					
THREE PLACE DECIMAL ±.005			SIZE B		
INTERPRET GEOMETRIC TOLERANCING PER:					
MATERIAL		FINISH	DWG. NO.		REV
DO NOT SCALE DRAWING			SCALE: 1:2	WEIGHT:	SHEET 1 OF 1